



OEG BUILDING MATERIALS - METAL FRAMING MANUFACTURERS

6001 BORDENTOWN AVE, SAYREVILLE, NJ 08872

P 732.667.3636 | WWW.OEGUSA.COM | ORDERS@OEGUSA.COM

PRODUCT

Strut Channel - Back to Back

MEMBER#

2716SC14-B2B

GAUGE

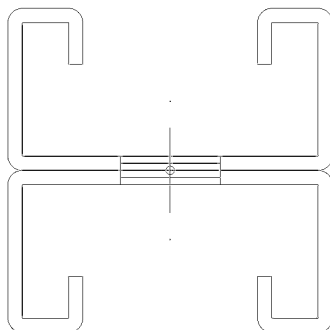
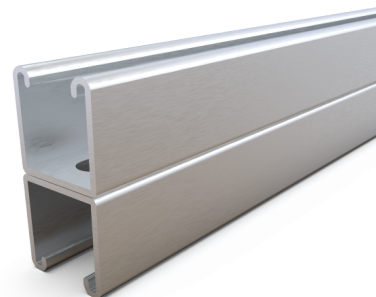
14

PHYSICAL PROPERTIES

Web Depth	1.625
Flange	2-7/16
Return	0.375
Weight (plf)	3.5359
Area (in ²)	1.04

GROSS PROPERTIES

Net Area (at 0.56" Hole) (in ²)	0.96867
Moment of Intertia Iy (in ⁴)	0.4948
Section Modulus Sy (in ³)	0.609
Radius of Gyration ry (in)	0.7147
Moment of Intertia Ix (in ⁴)	2.1319
Section Modulus Sx (top) (in ³)	0.8746
Radius of Gyration rx (in)	1.4835



DISCLAIMER:

All data, detail and specifications included in herein are intended as a general guide for using OEG Building Materials products. These products should not be used in design or construction without evaluation by a qualified engineer or architect to determine their suitability for a specific use. OEG Building Materials assumes no liability for failure resulting from use or misapplication of computation, details or specifications contained herein. OEG Building Material assumes no liability for damages resulting from improper application or insulation of these products.



OEG BUILDING MATERIALS - METAL FRAMING MANUFACTURERS

6001 BORDENTOWN AVE, SAYREVILLE, NJ 08872

P 732.667.3636 | WWW.OEGUSA.COM | ORDERS@OEGUSA.COM

BEAM LOADING

Span (in)	Max. Allow Uniform (fully braced) plf	Max. Allow. Uniform Load (plf)	Deflection at max load (in)	Max Uniform Load at Deflection (plf)			Max Allowable Moment at Span (lb-ft)
				L/180	L/240	L/360	
24	4158	4158.0	0.02	4158.4	4158.4	4158.4	2079.2
36	1848	1848.0	0.05	1848.2	1848.2	1848.2	2079.2
48	1040	1040.0	0.10	1039.6	1039.6	1039.6	2079.2
60	665	665.0	0.15	665.3	665.3	665.3	2079.2
72	462	411.0	0.21	462.0	462.0	431.4	1849.3
84	339	253.0	0.29	339.5	339.5	271.6	1547.4
96	260	158.0	0.38	259.9	259.9	182.0	1263.3
108	205	105.0	0.48	205.4	191.7	127.8	1060.6
120	166	73.0	0.60	166.3	139.8	93.2	912.3
240	42	8.0	2.38	23.3	17.5	11.6	380.8

NOTES:

- Complies with AISI S100-2016.
- Steel Material is A1003 Grade 50.
- Effective Properties incorporate.
- Strength increase from Cold Forming.
- Safety Factor for Beams is 1.67.
- Safety Factor for Columns is 1.80.

DISCLAIMER:

All data, detail and specifications included in herein are intended as a general guide for using OEG Building Materials products. These products should not be used in design or construction without evaluation by a qualified engineer or architect to determine their suitability for a specific use. OEG Building Materials assumes no liability for failure resulting from use or misapplication of computation, details or specifications contained herein. OEG Building Material assumes no liability for damages resulting from improper application or insulation of these products.



OEG BUILDING MATERIALS - METAL FRAMING MANUFACTURERS

6001 BORDENTOWN AVE, SAYREVILLE, NJ 08872

P 732.667.3636 | WWW.OEGUSA.COM | ORDERS@OEGUSA.COM

COLUMN LOADING

Span (in)	Max Column Load at Center of Gravity (lb)			
	K=0.65	K=0.80	K=1.0	K=1.2
24	24,788	24,309	23,038	21,636
36	23,205	21,636	19,423	17,225
48	20,906	18,681	15,830	13,299
60	18,497	15,830	12,729	10,250
72	16,171	13,299	10,250	8,204
84	14,047	11,175	8,474	6,453
96	12,185	9,439	7,114	4,941
108	10,595	8,204	5,621	3,904
120	9,259	7,114	4,553	KL/r>200
144	7,484	4,941	KL/r>200	KL/r>200
240	KL/r>200	KL/r>200	KL/r>200	KL/r>200

NOTES:

- Complies with AISI S100-2016.
- Steel Material is A1003 Grade 50.
- Effective Properties incorporate.
- Strength increase from Cold Forming.
- Safety Factor for Beams is 1.67.
- Safety Factor for Columns is 1.80.

DISCLAIMER:

All data, detail and specifications included in herein are intended as a general guide for using OEG Building Materials products. These products should not be used in design or construction without evaluation by a qualified engineer or architect to determine their suitability for a specific use. OEG Building Materials assumes no liability for failure resulting from use or misapplication of computation, details or specifications contained herein. OEG Building Material assumes no liability for damages resulting from improper application or insulation of these products.