



OEG BUILDING MATERIALS - METAL FRAMING MANUFACTURERS

6001 BORDENTOWN AVE, SAYREVILLE, NJ 08872

P 732.667.3636 | WWW.OEGUSA.COM | ORDERS@OEGUSA.COM

PRODUCT

Strut Channel - Back to Back

MEMBER#

2716SC12-B2B

GAUGE

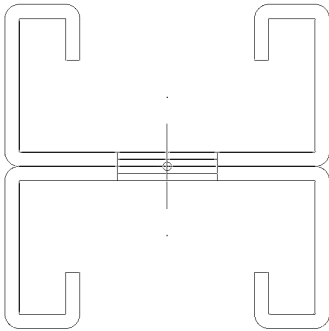
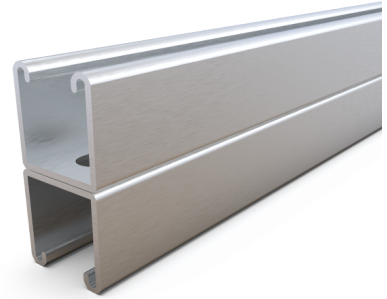
12

PHYSICAL PROPERTIES

Web Depth	1.625
Flange	2-7/16
Return	0.375
Weight (plf)	4.8903
Area (in ²)	1.4383

GROSS PROPERTIES

Net Area (at 0.56" Hole) (in ²)	1.3366
Moment of Intertia Iy (in ⁴)	0.6645
Section Modulus Sy (in ³)	0.8179
Radius of Gyration ry (in)	0.7051
Moment of Intertia Ix (in ⁴)	2.8629
Section Modulus Sx (top) (in ³)	1.1745
Radius of Gyration rx (in)	1.4635



DISCLAIMER:

All data, detail and specifications included in herein are intended as a general guide for using OEG Building Materials products. These products should not be used in design or construction without evaluation by a qualified engineer or architect to determine their suitability for a specific use. OEG Building Materials assumes no liability for failure resulting from use or misapplication of computation, details or specifications contained herein. OEG Building Material assumes no liability for damages resulting from improper application or insulation of these products.



OEG BUILDING MATERIALS - METAL FRAMING MANUFACTURERS

6001 BORDENTOWN AVE, SAYREVILLE, NJ 08872

P 732.667.3636 | WWW.OEGUSA.COM | ORDERS@OEGUSA.COM

BEAM LOADING

Span (in)	Max. Allow Uniform (fully braced) plf	Max. Allow. Uniform Load (plf)	Deflection at max load (in)	Max Uniform Load at Deflection (plf)			Max Allowable Moment at Span (lb-ft)
				L/180	L/240	L/360	
24	7186	7186.0	0.03	7185.6	7185.6	7185.6	3592.8
36	3194	3194.0	0.07	3193.6	3193.6	3193.6	3592.8
48	1796	1724.0	0.12	1796.4	1796.4	1796.4	3447.4
60	1150	996.0	0.19	1149.7	1149.7	1001.0	3113.8
72	798	615.0	0.28	798.4	798.4	579.3	2765.4
84	587	394.0	0.38	586.6	547.2	364.8	2410.8
96	449	257.0	0.49	449.1	366.6	244.4	2056.5
108	355	175.0	0.62	343.3	257.4	171.6	1768.0
120	287	124.0	0.77	250.2	187.7	125.1	1551.5
240	72	14.0	3.06	31.3	23.5	15.6	708.4

NOTES:

- Complies with AISI S100-2016.
- Steel Material is A1003 Grade 50.
- Effective Properties incorporate.
- Strength increase from Cold Forming.
- Safety Factor for Beams is 1.67.
- Safety Factor for Columns is 1.80.

DISCLAIMER:

All data, detail and specifications included in herein are intended as a general guide for using OEG Building Materials products. These products should not be used in design or construction without evaluation by a qualified engineer or architect to determine their suitability for a specific use. OEG Building Materials assumes no liability for failure resulting from use or misapplication of computation, details or specifications contained herein. OEG Building Material assumes no liability for damages resulting from improper application or insulation of these products.



OEG BUILDING MATERIALS - METAL FRAMING MANUFACTURERS

6001 BORDENTOWN AVE, SAYREVILLE, NJ 08872

P 732.667.3636 | WWW.OEGUSA.COM | ORDERS@OEGUSA.COM

COLUMN LOADING

Span (in)	Max Column Load at Center of Gravity (lb)			
	K=0.65	K=0.80	K=1.0	K=1.2
24	35,789	34,500	32,610	30,639
36	32,853	30,639	27,740	25,095
48	29,655	26,824	23,521	20,841
60	26,600	23,521	20,265	16,739
72	23,899	20,841	16,739	11,771
84	21,611	18,648	12,453	8,648
96	19,724	14,897	9,534	6,621
108	17,446	11,771	7,533	5,231
120	14,442	9,534	6,102	KL/r>200
144	10,029	6,621	KL/r>200	KL/r>200
240	KL/r>200	KL/r>200	KL/r>200	KL/r>200

NOTES:

- Complies with AISI S100-2016.
- Steel Material is A1003 Grade 50.
- Effective Properties incorporate.
- Strength increase from Cold Forming.
- Safety Factor for Beams is 1.67.
- Safety Factor for Columns is 1.80.

DISCLAIMER:

All data, detail and specifications included in herein are intended as a general guide for using OEG Building Materials products. These products should not be used in design or construction without evaluation by a qualified engineer or architect to determine their suitability for a specific use. OEG Building Materials assumes no liability for failure resulting from use or misapplication of computation, details or specifications contained herein. OEG Building Material assumes no liability for damages resulting from improper application or insulation of these products.