



OEG BUILDING MATERIALS - METAL FRAMING MANUFACTURERS

6001 BORDENTOWN AVE, SAYREVILLE, NJ 08872

P 732.667.3636 | WWW.OEGUSA.COM | ORDERS@OEGUSA.COM

PRODUCT

Strut Channel - Back to Back

MEMBER#

158SC14-B2B

GAUGE

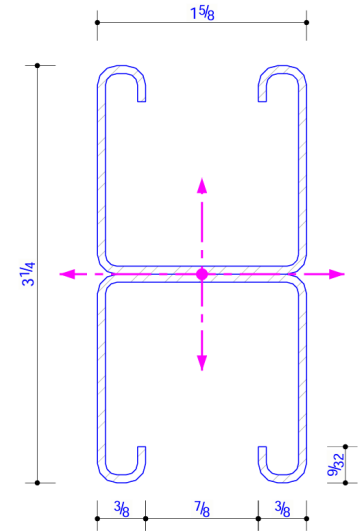
14

PHYSICAL PROPERTIES

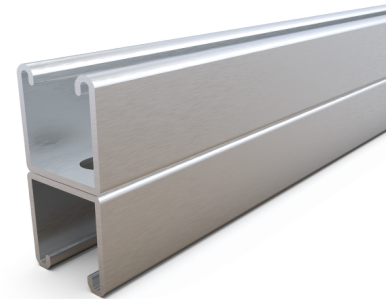
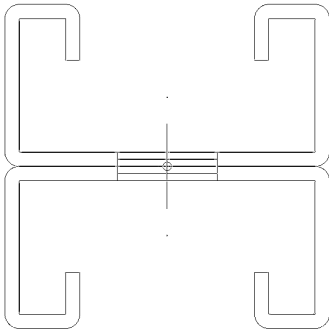
Web Depth	1.625
Flange	1.625
Return	0.375
Weight (plf)	2.748
Area (in ²)	0.80824

GROSS PROPERTIES

Net Area (at 0.56" Hole) (in ²)	0.73694
Moment of Intertia Iy (in ⁴)	0.3563
Section Modulus Sy (in ³)	0.4386
Radius of Gyration ry (in)	0.664
Moment of Intertia Ix (in ⁴)	0.7303
Section Modulus Sx (top) (in ³)	0.4494
Radius of Gyration rx (in)	0.9955



1 15/8" x 3 1/4" STRUT CHANNEL
CROSS SECTION



DISCLAIMER:

All data, detail and specifications included in herein are intended as a general guide for using OEG Building Materials products. These products should not be used in design or construction without evaluation by a qualified engineer or architect to determine their suitability for a specific use. OEG Building Materials assumes no liability for failure resulting from use or misapplication of computation, details or specifications contained herein. OEG Building Material assumes no liability for damages resulting from improper application or insulation of these products.



OEG BUILDING MATERIALS - METAL FRAMING MANUFACTURERS

6001 BORDENTOWN AVE, SAYREVILLE, NJ 08872

P 732.667.3636 | WWW.OEGUSA.COM | ORDERS@OEGUSA.COM

BEAM LOADING

Span (in)	Max. Allow Uniform (fully braced) plf	Max. Allow. Uniform Load (plf)	Deflection at max load (in)	Max Uniform Load at Deflection (plf)			Max Allowable Moment at Span (lb-ft)
				L/180	L/240	L/360	
24	2456	2456.0	0.04	2456.0	2456.0	2456.0	1228
36	1092	1091.6	0.09	1091.6	1091.6	1091.6	1228
48	614	614.0	0.16	614.0	614.0	498.7	1228
60	393	367.4	0.24	367.4	367.4	255.3	1148
72	273	230.2	0.31	230.2	221.6	147.8	1036
84	200	150.4	0.38	150.4	139.6	93.1	921
96	154	100.6	0.43	100.6	93.5	62.3	805
108	121	68.4	0.47	68.4	65.7	43.8	693
120	98	48.6	0.51	48.6	47.9	31.9	607
240	25	5.5	0.91	5.5	5.5	4.0	273

NOTES:

- Complies with AISI S240-20.
- Steel Material is A1003 Grade 50.
- Effective Properties incorporate.
- Strength increase from Cold Forming.
- Safety Factor for Beams is 1.67.
- Safety Factor for Columns is 1.80.

DISCLAIMER:

All data, detail and specifications included in herein are intended as a general guide for using OEG Building Materials products. These products should not be used in design or construction without evaluation by a qualified engineer or architect to determine their suitability for a specific use. OEG Building Materials assumes no liability for failure resulting from use or misapplication of computation, details or specifications contained herein. OEG Building Material assumes no liability for damages resulting from improper application or insulation of these products.



OEG BUILDING MATERIALS - METAL FRAMING MANUFACTURERS

6001 BORDENTOWN AVE, SAYREVILLE, NJ 08872

P 732.667.3636 | WWW.OEGUSA.COM | ORDERS@OEGUSA.COM

COLUMN LOADING

Span (in)	Max Column Load at Center of Gravity (lb)			
	K=0.65	K=0.80	K=1.0	K=1.2
24	19,692	19,003	17,982	16,903
36	18,114	16,903	15,289	13,787
48	16,358	14,772	12,880	11,314
60	14,645	12,880	10,974	8,835
72	13,099	11,314	8,835	6,173
84	11,767	9,892	6,531	4,535
96	10,653	7,813	5,000	3,472
108	9,226	6,173	3,951	2,744
120	7,574	5,000	3,200	2,222
144	5,260	3,472	2,222	1,543
240	1,894	1,250	KL/r>200	KL/r>200

NOTES:

- Complies with AISI S240-20.
- Steel Material is A1003 Grade 50.
- Effective Properties incorporate.
- Strength increase from Cold Forming.
- Safety Factor for Beams is 1.67.
- Safety Factor for Columns is 1.80.

DISCLAIMER:

All data, detail and specifications included in herein are intended as a general guide for using OEG Building Materials products. These products should not be used in design or construction without evaluation by a qualified engineer or architect to determine their suitability for a specific use. OEG Building Materials assumes no liability for failure resulting from use or misapplication of computation, details or specifications contained herein. OEG Building Material assumes no liability for damages resulting from improper application or insulation of these products.