



OEG BUILDING MATERIALS - METAL FRAMING MANUFACTURERS

6001 BORDENTOWN AVE, SAYREVILLE, NJ 08872

P 732.667.3636 | WWW.OEGUSA.COM | ORDERS@OEGUSA.COM

PRODUCT

Strut Channel - Back to Back

MEMBER#

1316SC14-B2B

GAUGE

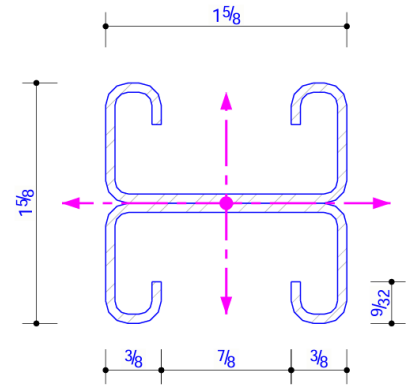
14

PHYSICAL PROPERTIES

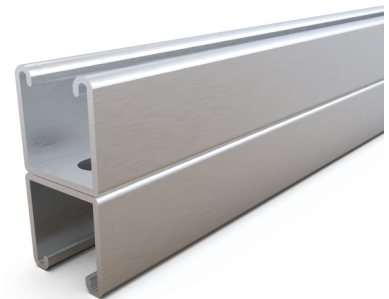
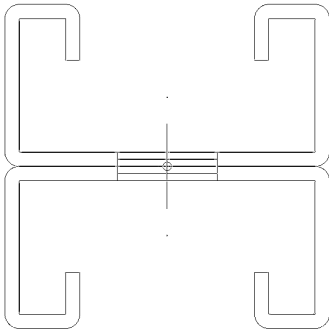
Web Depth	1.625
Flange	13/16
Return	0.375
Weight (plf)	1.9602
Area (in ²)	0.57652

GROSS PROPERTIES

Net Area (at 0.56" Hole) (in ²)	0.50522
Moment of Intertia Iy (in ⁴)	0.2164
Section Modulus Sy (in ³)	0.26633
Radius of Gyration ry (in)	0.61266
Moment of Intertia Ix (in ⁴)	0.12257
Section Modulus Sx (top) (in ³)	0.15086
Radius of Gyration rx (in)	0.4611



1 15/8" x 15/8" STRUT CHANNEL CROSS SECTION



DISCLAIMER:

All data, detail and specifications included in herein are intended as a general guide for using OEG Building Materials products. These products should not be used in design or construction without evaluation by a qualified engineer or architect to determine their suitability for a specific use. OEG Building Materials assumes no liability for failure resulting from use or misapplication of computation, details or specifications contained herein. OEG Building Material assumes no liability for damages resulting from improper application or insulation of these products.



OEG BUILDING MATERIALS - METAL FRAMING MANUFACTURERS

6001 BORDENTOWN AVE, SAYREVILLE, NJ 08872

P 732.667.3636 | WWW.OEGUSA.COM | ORDERS@OEGUSA.COM

BEAM LOADING

Span (in)	Max. Allow Uniform (fully braced) plf	Max. Allow. Uniform Load (plf)	Deflection at max load (in)	Max Uniform Load at Deflection (plf)			Max Allowable Moment at Span (lb-ft)
				L/180	L/240	L/360	
24	904	904.0	0.1	904.0	904.0	669.6	452
36	402	401.8	0.2	396.8	297.6	198.4	452
48	226	222.0	0.4	167.4	125.5	83.7	444
60	145	135.7	0.5	85.7	64.3	42.9	424
72	100	89.8	0.7	49.6	37.2	24.8	404
84	74	62.9	0.9	31.2	23.4	15.6	385
96	57	45.6	1.2	20.9	15.7	10.5	365
108	45	34.2	1.4	14.7	11.0	7.3	346
120	36	26.2	1.6	10.7	8.0	5.4	327
240	9	3.5	3.5	1.3	1.0	0.7	175

NOTES:

- Complies with AISI S240-20.
- Steel Material is A1003 Grade 50.
- Effective Properties incorporate.
- Strength increase from Cold Forming.
- Safety Factor for Beams is 1.67.
- Safety Factor for Columns is 1.80.

DISCLAIMER:

All data, detail and specifications included in herein are intended as a general guide for using OEG Building Materials products. These products should not be used in design or construction without evaluation by a qualified engineer or architect to determine their suitability for a specific use. OEG Building Materials assumes no liability for failure resulting from use or misapplication of computation, details or specifications contained herein. OEG Building Material assumes no liability for damages resulting from improper application or insulation of these products.



OEG BUILDING MATERIALS - METAL FRAMING MANUFACTURERS

6001 BORDENTOWN AVE, SAYREVILLE, NJ 08872

P 732.667.3636 | WWW.OEGUSA.COM | ORDERS@OEGUSA.COM

COLUMN LOADING

Span (in)	Max Column Load at Center of Gravity (lb)			
	K=0.65	K=0.80	K=1.0	K=1.2
24	13,200	12,630	11,900	10,990
36	11,987	10,990	9,310	7,601
48	10,442	8,737	6,505	4,593
60	8,594	6,505	4,232	2,938
72	6,774	4,593	2,939	2,041
84	5,111	3,374	2,159	1,499
96	3,913	2,583	1,653	1,148
108	3,091	2,041	1,306	KL/r>200
120	2,504	1,653	1,058	KL/r>200
144	1,739	1,148	KL/r>200	KL/r>200
240	KL/r>200	KL/r>200	KL/r>200	KL/r>200

NOTES:

- Complies with AISI S240-20.
- Steel Material is A1003 Grade 50.
- Effective Properties incorporate.
- Strength increase from Cold Forming.
- Safety Factor for Beams is 1.67.
- Safety Factor for Columns is 1.80.

DISCLAIMER:

All data, detail and specifications included in herein are intended as a general guide for using OEG Building Materials products. These products should not be used in design or construction without evaluation by a qualified engineer or architect to determine their suitability for a specific use. OEG Building Materials assumes no liability for failure resulting from use or misapplication of computation, details or specifications contained herein. OEG Building Material assumes no liability for damages resulting from improper application or insulation of these products.