



OEG BUILDING MATERIALS - METAL FRAMING MANUFACTURERS

6001 BORDENTOWN AVE, SAYREVILLE, NJ 08872

P 732.667.3636 | WWW.OEGUSA.COM | ORDERS@OEGUSA.COM

PRODUCT

Strut Channel - Back to Back

MEMBER#

1316SC12-B2B

GAUGE

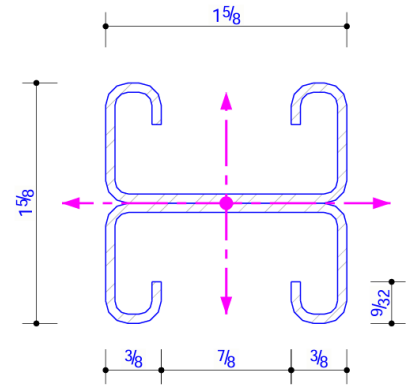
12

PHYSICAL PROPERTIES

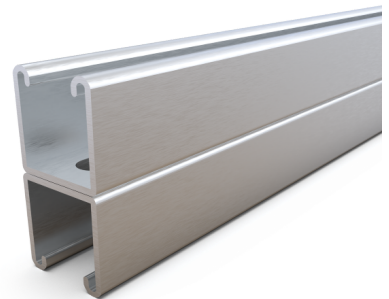
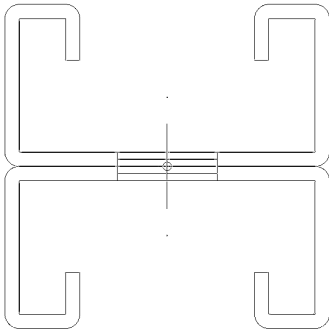
Web Depth	1.625
Flange	13/16
Return	0.375
Weight (plf)	2.6427
Area (in ²)	0.77726

GROSS PROPERTIES

Net Area (at 0.56" Hole) (in ²)	0.67556
Moment of Intertia Iy (in ⁴)	0.28258
Section Modulus Sy (in ³)	0.34779
Radius of Gyration ry (in)	0.60296
Moment of Intertia Ix (in ⁴)	0.1556
Section Modulus Sx (top) (in ³)	0.1915
Radius of Gyration rx (in)	0.44742



1 15/8" x 15/8" STRUT CHANNEL
CROSS SECTION



DISCLAIMER:

All data, detail and specifications included in herein are intended as a general guide for using OEG Building Materials products. These products should not be used in design or construction without evaluation by a qualified engineer or architect to determine their suitability for a specific use. OEG Building Materials assumes no liability for failure resulting from use or misapplication of computation, details or specifications contained herein. OEG Building Material assumes no liability for damages resulting from improper application or insulation of these products.



OEG BUILDING MATERIALS - METAL FRAMING MANUFACTURERS

6001 BORDENTOWN AVE, SAYREVILLE, NJ 08872

P 732.667.3636 | WWW.OEGUSA.COM | ORDERS@OEGUSA.COM

BEAM LOADING

Span (in)	Max. Allow Uniform (fully braced) plf	Max. Allow. Uniform Load (plf)	Deflection at max load (in)	Max Uniform Load at Deflection (plf)			Max Allowable Moment at Span (lb-ft)
				L/180	L/240	L/360	
24	1240	1239.6	0.10	1239.6	1239.6	850.0	619.8
36	551	550.9	0.22	503.7	377.8	251.9	619.8
48	310	309.9	0.39	212.5	159.4	106.3	619.8
60	198	193.1	0.59	108.8	81.6	54.4	603.5
72	138	129.9	0.83	63.0	47.2	31.5	584.5
84	101	92.4	1.09	39.7	29.7	19.8	565.7
96	77	68.4	1.37	26.6	19.9	13.3	547.1
108	61	52.2	1.68	18.7	14.0	9.3	528.6
120	50	40.8	2.00	13.6	10.2	6.8	510.1
240	12	6.6	5.14	1.7	1.3	0.9	327.9

NOTES:

- Complies with AISI S240-20.
- Steel Material is A1003 Grade 50.
- Effective Properties incorporate.
- Strength increase from Cold Forming.
- Safety Factor for Beams is 1.67.
- Safety Factor for Columns is 1.80.

DISCLAIMER:

All data, detail and specifications included in herein are intended as a general guide for using OEG Building Materials products. These products should not be used in design or construction without evaluation by a qualified engineer or architect to determine their suitability for a specific use. OEG Building Materials assumes no liability for failure resulting from use or misapplication of computation, details or specifications contained herein. OEG Building Material assumes no liability for damages resulting from improper application or insulation of these products.



OEG BUILDING MATERIALS - METAL FRAMING MANUFACTURERS

6001 BORDENTOWN AVE, SAYREVILLE, NJ 08872

P 732.667.3636 | WWW.OEGUSA.COM | ORDERS@OEGUSA.COM

COLUMN LOADING

Span (in)	Max Column Load at Center of Gravity (lb)			
	K=0.65	K=0.80	K=1.0	K=1.2
24	18,111	17,538	16,187	14,675
36	16,367	14,675	12,250	9,823
48	13,879	11,431	8,291	5,782
60	11,228	8,292	5,329	3,700
72	8,665	5,782	3,700	2,570
84	6,435	4,248	2,719	1,888
96	4,927	3,252	2,081	1,445
108	3,893	2,570	1,645	KL/r>200
120	3,153	2,081	1,332	KL/r>200
144	2,189	1,445	KL/r>200	KL/r>200
240	KL/r>200	KL/r>200	KL/r>200	KL/r>200

NOTES:

- Complies with AISI S240-20.
- Steel Material is A1003 Grade 50.
- Effective Properties incorporate.
- Strength increase from Cold Forming.
- Safety Factor for Beams is 1.67.
- Safety Factor for Columns is 1.80.

DISCLAIMER:

All data, detail and specifications included in herein are intended as a general guide for using OEG Building Materials products. These products should not be used in design or construction without evaluation by a qualified engineer or architect to determine their suitability for a specific use. OEG Building Materials assumes no liability for failure resulting from use or misapplication of computation, details or specifications contained herein. OEG Building Material assumes no liability for damages resulting from improper application or insulation of these products.